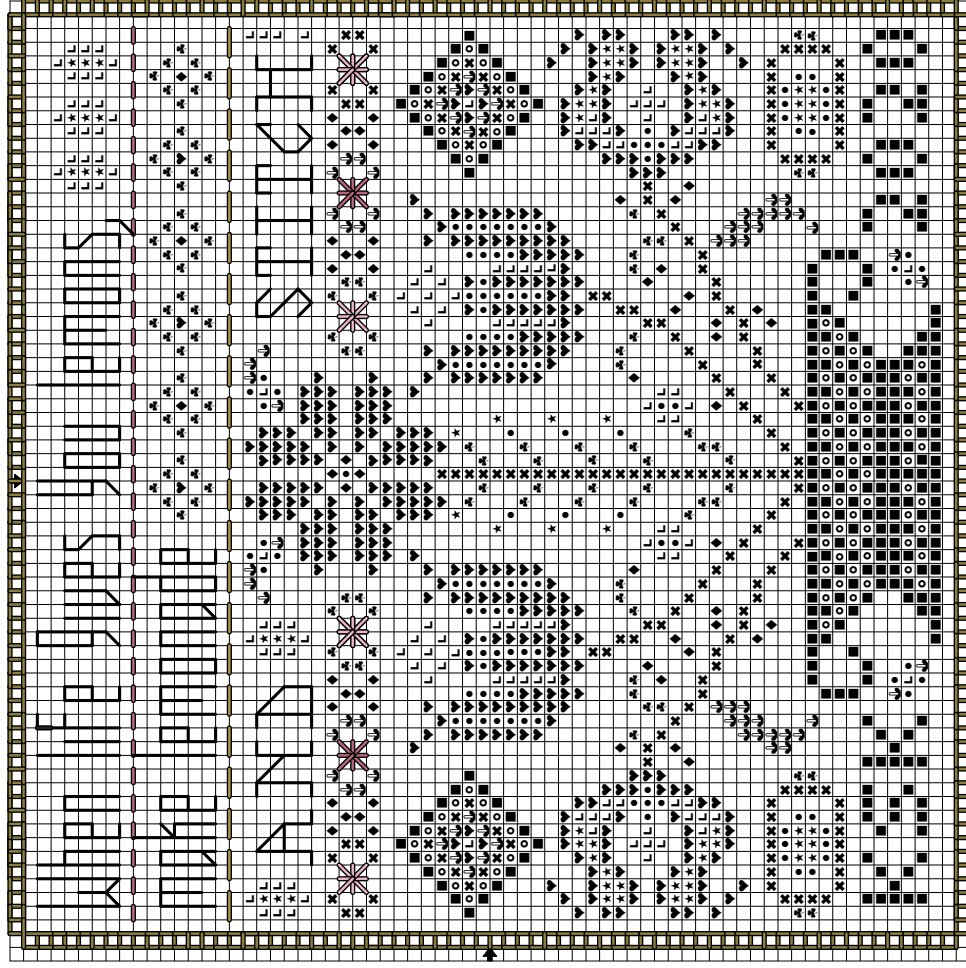


" LEMONS"

COMPLIMENTARY Mini Chart from Rosewood Manor

NOT FOR RESALE---MAY NOT BE COPIED



Back

	DMC
	646
	743
	744
	745
	831
	832
	833
	844
	3687
	3689

DESIGN SIZE: 70 X 70 stitches
 Fabric: Stitch on linen of your choice.

*Stitch two strands over two threads-
 for most counts of fabric.

4 Sided Stitch: 1 strand
 DMC 831

BS: 1 strand

*Words DMC 844

*Dash lines DMC 3687 & 832



ROSEWOOD MANOR

Phone 317-574-9186

Please leave a message

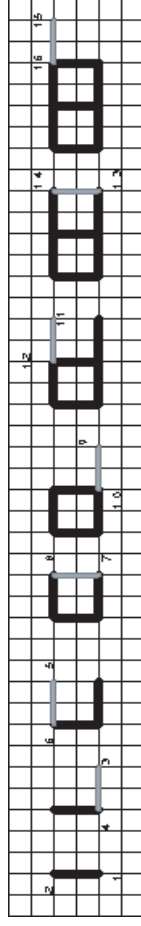
www.rosewoodxstitch.com

Email: karen@rosewoodxstitch.com

BE CREATIVE!

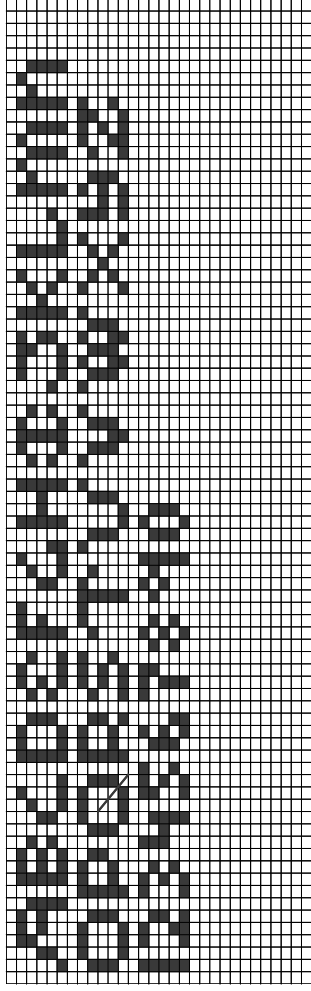
**Insert into top of box. Add a selection of tea bags and give to a friend.

**Add Mill Hill Beads to outside border, instead of stitching.

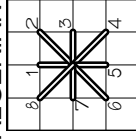


4-Sided Stitch: (above) Give a little tug at end of each stitch, to add demension.

USE ALPHABET TO PERSONALIZE YOUR PIECE:



ALGERIAN EYELET:



DMC 3687 & 3689

1 strand floss over 4 threads of linen

All stitches toward center.

*I designed this mini chart in support of the
 needlework industry during these crazy times!
 Stay safe and Healthy! Enjoy! Karen Kluba*

©Copyright 2020 Karen Kluba All rights reserved