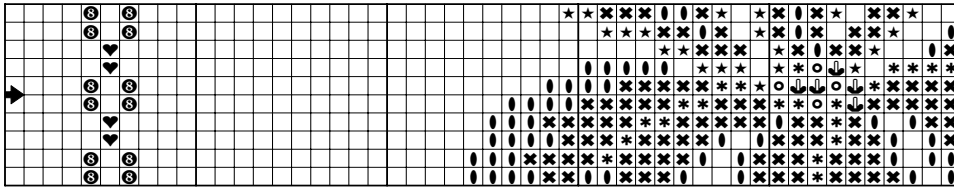
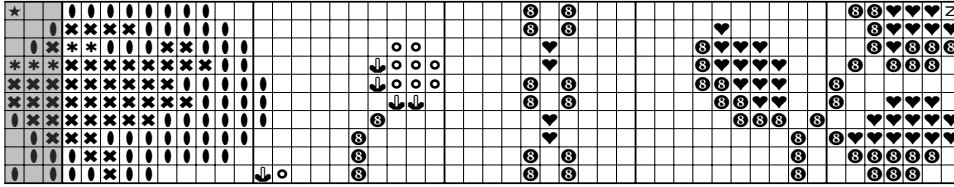


CORRECTIONS --10 rows of stitching were left out of the middle of the chart! Please insert these rows between sections as shown. I'm so sorry!---Karen

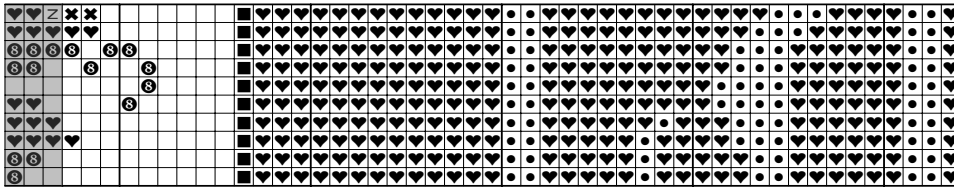
SECTION 1-A Insert between Section 1 and Section 8



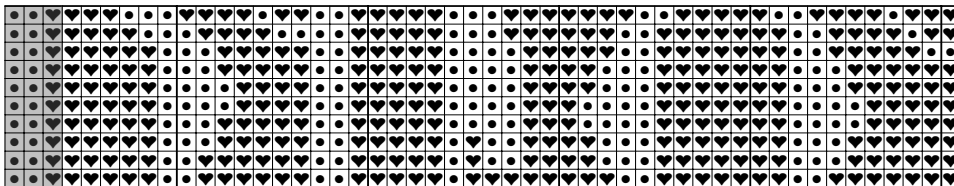
SECTION 2-A Insert between Section 2 and Section 9



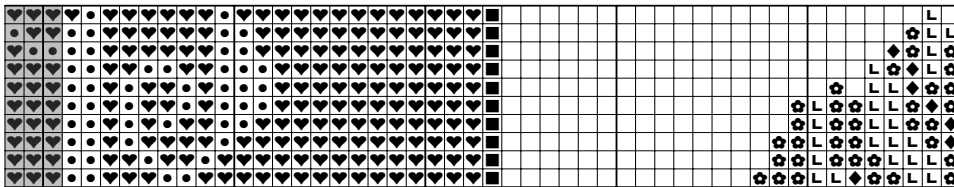
Section 3-A Insert between Section 3 and Section 10



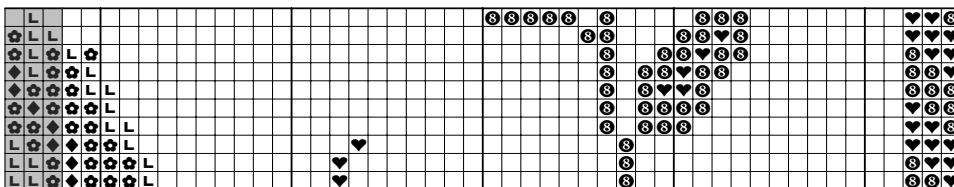
Section 4-A Insert between Section 4 and Section 11



Section 5-A Insert between Section 5 and Section 12



Section 6-A Insert between Section 6 and Section 13



Section 7-A Insert between Section 7 and Section 14

