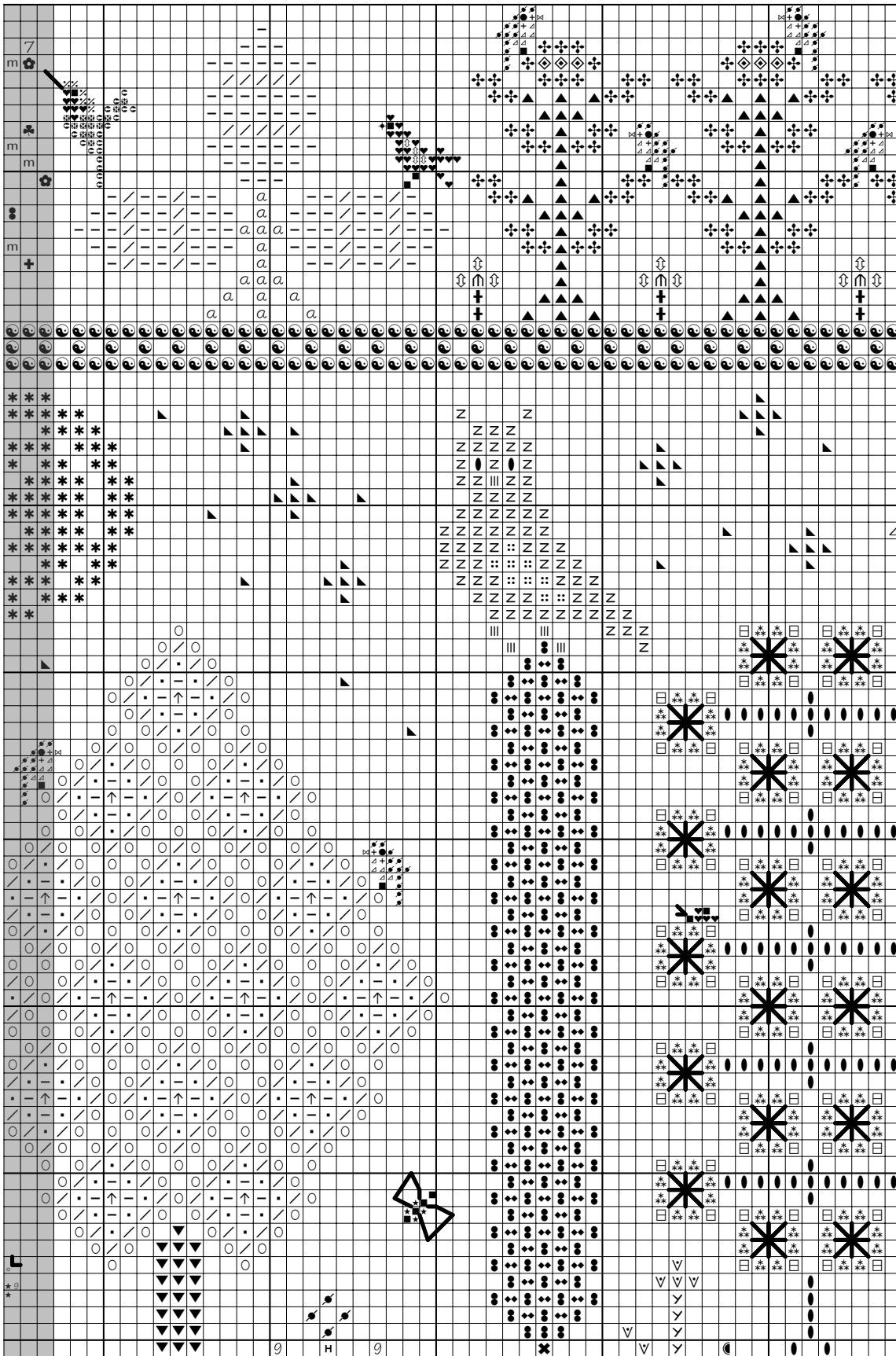


SECTION 5



- DMC**
- 152
 - 221
 - 223
 - 310
 - 318
 - 319
 - 320
 - 367
 - 368
 - 413
 - 469
 - 502
 - 520
 - 523
 - 610
 - 611
 - 632
 - 645
 - 647
 - 676
 - 729
 - 730
 - 746
 - 801
 - 829
 - 840
 - 890
 - 926
 - 927
 - 928
 - 937
 - 938
 - 977
 - 3021
 - 3022
 - 3041
 - 3042
 - 3345
 - 3346
 - 3347
 - 3348
 - 3362
 - 3363
 - 3364
 - 3371
 - 3721
 - 3722
 - 3772
 - 3787
- BS:
 *Hummingbird's
 beak--
 DMC 3799
 *Bee's wings--
 DMC 318
- Smyrna Cross--
 DMC 3362